

# **Whanganui West Catchment Group Strategic Plan 2022**



**Sharing sustainable land and water management practices to improve our legacy**

## KEY INFORMATION

|   |  |  |
|---|--|--|
| <p><b><u>Location</u></b><br/>Maxwell/Paakaraka to Westmere</p>   | <p><b><u>Key Issues</u></b></p> <ul style="list-style-type: none"> <li>• High <i>E. coli</i> levels/contaminating swimming areas</li> <li>• Sediment runoff/erosion</li> <li>• Nutrient runoff/algal blooms</li> </ul> | <p><b><u>Key Focus Areas</u></b></p> <p><b><i>Social/Educational/Cultural/Recreation</i></b><br/><b><i>A great place to live, learn, work and play</i></b></p> <p>Support farmer and community spirit with education and action on the ground and strengthen farmers and growers social license to operate.</p> <p>Become the go to group for connecting landowners with the information and funding they need to achieve sustainable land use.</p> <p>Have healthy waterways and whenua to support safe mahinga kai practices, retention of matauranga Maori and tangata wellbeing.</p> <p>Re-introduce and rebuild plant and animal species to create resilient eco-systems and support cultural practices – e.g. mahi toi (arts), Papakainga (housing) etc.</p> <p><b><i>Business</i></b><br/>Support sustainable farm management for profitability via education, diversification, and innovation.</p> <p><b><i>Environmental</i></b><br/>Encourage and support landowners, farmers, whānau, hapū, iwi, communities and agencies to work together to improve water quality, biodiversity and carbon neutral /carbon positive farming systems.</p> <p>Identify climate change risks and impacts within the catchment and develop solutions. Protect and restore wetlands to support natural filtration systems.</p> |
| <p><b><u>Main waterways</u></b><br/>Ōtotoka, Ōkehu, Kai Iwi, Mōwhānau and Omapu</p>   |  |  |
| <p><b><u>Size</u></b><br/>Ototoka = 2928 h<br/>Okehu = 6861 h<br/>Kai Iwi = 19128 h<br/>Mowhanau = 2907 h<br/>Omapu = 572 h<br/>Collective total = 32396 hectares (MFE data)</p>  |  |  |
| <p><b><u>Committee Members</u></b><br/>David Cotton<br/>Duncan Matthews<br/>George Matthews<br/>Anne-Marie Broughton<br/>Fraser Middleton<br/>Harriet Horrocks<br/>Danny Broughton<br/>Donald Richards<br/>Mike Russell<br/>Toiora Hawira<br/>Bruce Dave<br/>Jason Reid<br/>Alan Davison<br/>Christopher Blair</p> <p><b><u>Committee Executive</u></b><br/>George Matthews (Chair)<br/>Anne-Marie Broughton (Co-Chair)<br/>Mike Russell (Treasurer)<br/>Harriet Horrocks (Administrator)</p> |  |  |

---

# THE JOURNEY – Whanganui West Catchment Group

---

It all started here ... 09 March 2020

WHANGANUI CHRONICLE

## Locals call meeting to discuss polluted streams

28 Feb, 2020 05:00 AM

© 2 n

Kai Iwi landowners George Matthews and David Cotton are calling a public meeting to address the water quality of local streams. The meeting is at the Rāpanui/Mōwhanau Community Centre at 7pm on Monday, March 9, with a light supper to follow. They want everyone with an interest in freshwater issues to come.

See full article: <https://www.nzherald.co.nz/whanganui-chronicle/news/locals-call-meeting-to-discuss-polluted-streams/6BXMH2DAZ2NLMLGS3FPSWJGDVI/>

The first community meeting held on 9 March 2020 was attended by more than 80 people. The community unanimously agreed to establish a group to improve water quality within the Ōtotoke, Ōkehu, Kai Iwi, Mōwhānau and Ōmapu catchments. A working group then undertook the job of exploring the needs of the community and the requirements to setup a catchment group.



A second community meeting (Pictured above) was held on June 21st 2021 to confirm the establishment of the Whanganui West Catchment Group Incorporated Society. 15 members formed the official requirement to register as an incorporated society and were appointed as the inaugural committee: David Cotton, Duncan Matthews, George Matthews, Anne-Marie Broughton, Fraser Middleton, Harriet Horrocks, Danny Broughton, Donald Richards, Mike Russell, Toiora Hawira, Bruce Dave, Jason Reid, Alan Davison, Christopher Blair and Janie Ford. The size and membership of the committee will be reviewed at the 2022 Annual General Meeting.

An inaugural Executive Committee was appointed on 21/06/21 (left to right below): George Matthews (Chair), Anne-Marie Broughton (Co-Chair), Mike Russell (Treasurer), Harriet Horrocks (Administrator). They will hold office until the 2022 AGM.



In line with the requirements of an incorporated society, a set of rules was developed and the purpose of the society defined:

#### **Whanganui West Catchment Group (Incorporated Society) Purpose**

The primary purpose of the Society is to achieve enhanced environmental outcomes and facilitate and promote on-farm good practice and sustainable land management

Since June 2021, the committee has been meeting regularly to develop a deeper understanding of the state of the catchment and the needs and aspirations of farmers and the wider community. Rigorous planning has been undertaken supported by Tania Bramley from the NZ Land Care Trust and the committee has developed a three year strategic plan and one year workplan. 2022 is the time for action – we’ve planned the work, now it’s time to **WORK THE PLAN!**



**Above: Committee Planning Workshop – Kai Iwi Hall 6 December 2021**

We have a website – [www.wwcg.co.nz](http://www.wwcg.co.nz), a Facebook page and the Whanganui West Catchment Group can be contacted via our administrator at [wwcatchmentgroup@gmail.com](mailto:wwcatchmentgroup@gmail.com)



The committee acknowledges the support of Tania Bramley from NZ Landcare Trust in the preparation of this plan.





---

## **UNDERSTANDING OUR CATCHMENT**

### **Cultural History provided by George Matthews**

The catchment area of the streams which our collective is responsible for is generally known as being under the mana whenua of a tupuna named Tamarehe (Tamareheroto people). His two sons were named Iti and Pukeko and they were given the areas of tribal responsibility which are today known as Ngati Iti and Ngati Pukeko.

Tamarehe had influence over the area from the north bank of the Whanganui river northward to the Okehu stream north, of which today, the mana whenua right is held by the descendants of Ngati Maika.

The metal pit at Waitahinga is a watershed of Tamarehe, Ngāti Maika and Ngāti Porua.

The north western boundary of the 1848 Whanganui Purchase/Sale, (Deed of Sale) is the mouth of the Mowhanau Stream. The boundary line crosses State Highway 3 roughly at Smith Road or Matakītaki. At the junction of the Rangitatau, Ruahine and Tokomaru blocks is Puatērapa, an ancient Kainga and the interior most boundary point of the Tamareheroto people.

## Issues

The Horizons Environment Committee graph (15 September 2021) shows that the Whanganui West Catchment had three out of four of the highest contaminated swimming sites in the region over the 2020-2021 monitoring season. The report states that the predominant cause of contamination relates to bovine and avian faecal matter. More localised water testing and tracking is required to determine the contamination site sources.

The Ōtotoke, Kai Iwi and Mōwhānau streams were given a long-term special status in December 2018 because of their poor or highly variable water quality. It's clear that we need to improve water quality and it's equally clear that a full range of resources are needed to make it happen!



Above: Overall swim ability at bathing sites during the 2020-2021 monitoring season. These results are made up of a combination of *E. coli*; Enterococci and cyanobacterial results as appropriate based on the site, with the worst case of these on any one sampling event deciding the result for that sample. Source: Horizons Regional Council

The Mōwhānau and Kai Iwi Streams are the only two sites consistently monitored by Horizons Regional Council. Both streams consistently breach One Plan target limits set for *E. coli*, clarity (suspended sediment), Dissolved Reactive Phosphorous (DRP) and Dissolved Inorganic Nitrogen. The waterways are degraded, high in pathogens and nutrients.

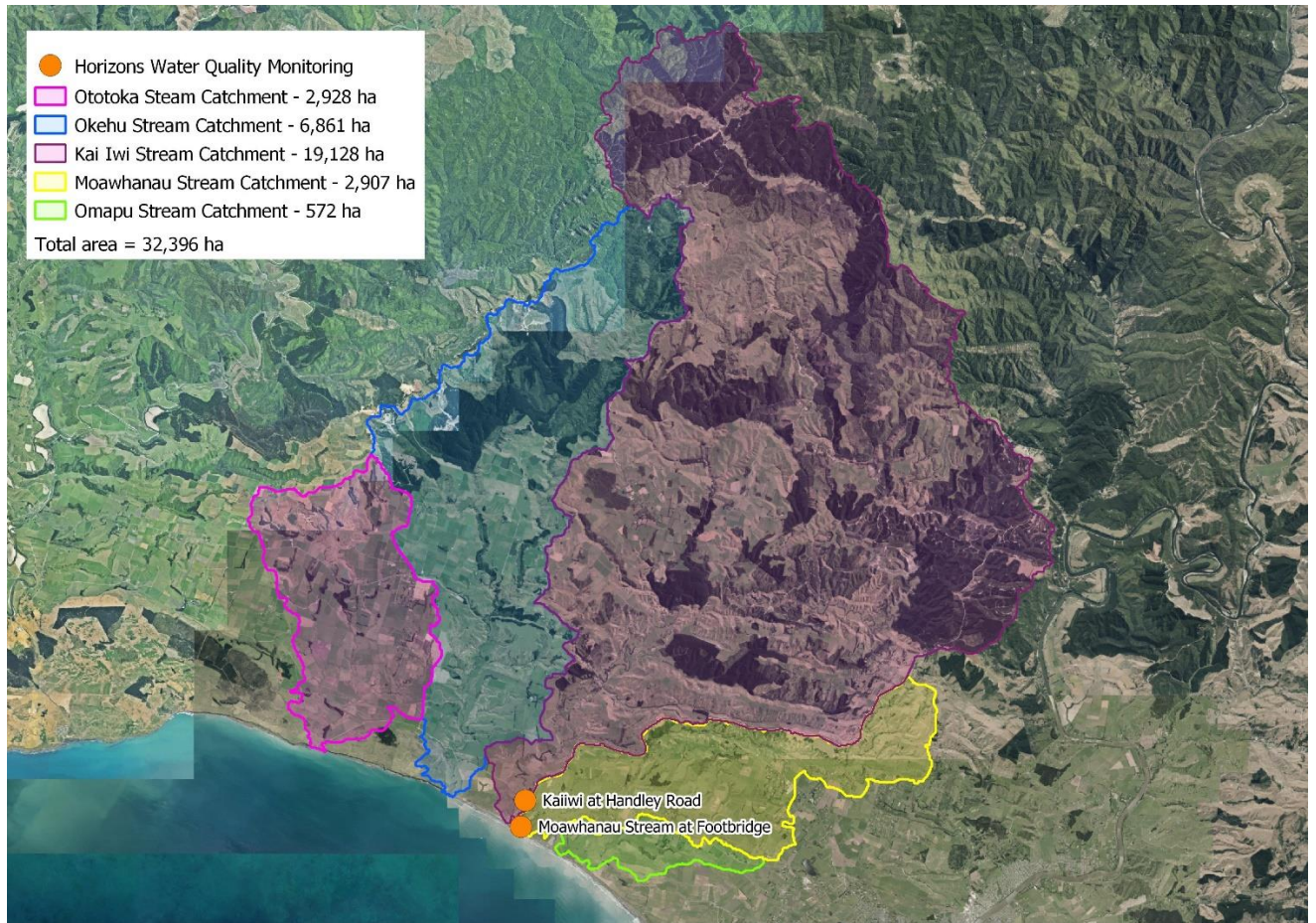
| Attribute   | Trigger values (limits)                         | Mowhanau Stream 5-year median | Kai Iwi Stream 5-year median |
|---|---|-------------------------------|------------------------------|
| <i>E. coli</i> – presence of faecal coliforms/bacteria                  | 260 n/100ml (national contact recreation limit) | 430 n/100ml                   | 350 n/100ml                  |
| Clarity – visibility/sediment load within the waterways                 | Mowhanau (2.5m)<br>Kai Iwi (1.6m)<br>(One Plan) | 1m                            | 0.24m                        |
| Dissolved Reactive Phosphorous (DRP)                                    | 0.015 mg/L<br>(One Plan)                        | 0.031 mg/L                    | 0.016 mg/L                   |
| Dissolved Inorganic Nitrogen (DIN) OR (Soluble Inorganic Nitrogen -SIN) | 0.167 mg/L<br>(One Plan)                        | 0.23 mg/L                     | 0.56 mg/L                    |

NB: Water collection and monitoring is managed by the Horizons Regional Council and the data is available on the Lawa website – [www.lawa.org.nz](http://www.lawa.org.nz)

| Issue  | Evidenced by   | Caused by   |
|--|--|---|
| Water quality  | High nutrient levels   | Run off, intensive farming, activity not suited to land type, lack of wetlands, not enough riparian fencing, planting or maintenance.   |
|  | High Turbidity/Low Clarity   | Erosion, climate change and biodiversity loss.  |
| Stream health  | Lack of habitat  | Stream bed smothered with sediment, absence of riparian planting  |
|  | Elevated temperature & invasive pest plant species   | Lack of shade   |
| Biological   | Algal growth   | Riparian depletion and excess nutrients   |
|  | High E. coli levels  | Birds, bovine stock and rural sewage disposal.  |
| Physical   | Limited wetland sites within the catchment.  | Draining for farmland   |
|  | Areas of steep hills prone to slipping   | Trees protecting hills from erosion removed   |
| Workplace stress, burnout and confusion                                  | Nationwide increase in demand for mental health services, farmer protests, industry body statistics.   | Continuous and massive changes to regulatory and operating environments, information overload, lack of appropriate support, education and training, Covid 19 pressures  |
| Farmer, community, council and consumer relationships and communications | Farmers' licence to operate is under intense scrutiny and there's a lot of negative media coverage concerning the negative environmental impacts of farming and animal welfare concerns. | The city/rural divide, mis-information, communication and trust breakdown between Horizons and some farmers, science/facts not clearly communicated to farmers and/or the advice provided is conflicting and confusing, lack of farmer/consumer market insights, understanding and interaction. |



## Geographic Map



## Stakeholder List

| Stakeholders   | Leadership Team  | Structure            | Funding       |
|--|--|----------------------|---------------|
| Catchment land owners and farmers<br>Local business & community<br>Paakaraka, Kai Iwi, Te Aroha & Taipaake Marae<br>Te Kaahui o Rauru<br>Horizons Regional Council<br>Whanganui District Council & Councillors<br>Whanganui & Partners<br>Schools<br>Dairy NZ, B+L NZ, MPI<br>NGOs – F&G, Forest & Bird Forestry | David Cotton<br>Duncan Matthews<br>George Matthews<br>Anne-Marie Broughton<br>Fraser Middleton<br>Harriet Horrocks<br>Danny Broughton<br>Donald Richards<br>Mike Russell<br>Toiora Hawira<br>Bruce Dave<br>Jason Reid<br>Alan Davison<br>Christopher Blair | Incorporated society | Nil currently |

# Whanganui West Catchment Collective Project

## Sharing sustainable land and water management practices to improve our legacy

---

The strategic goals and aspirations of our farmers and community are to:

1. Be a tightly knit community, sharing experiences, wisdom, resources and foresight to produce the best food and fibre products from our region.
2. Achieve annual improvements to land and fresh-water eco-systems and water quality.
3. Be at the leading edge of farm best practice, innovation & sustainable business models.

### The Way We Do Things

- ❖ Together is our strength
- ❖ Strive for environmental and economic gains
- ❖ Think and act for the long term
- ❖ Leverage off each other's strengths & knowledge
- ❖ Do what we say we'll do, get stuff done and have some fun!

---

### 3 YEAR STRATEGIC PLAN

| Goal  | Aspirations  | Actions   |
|---|--|---|
| <b>Be a tightly knit community, sharing experiences, wisdom, resources and foresight to produce the best food and fibre products from our region.</b> | Have strong relationships, collaborations, communications and understandings between farmers, hapū-iwi, community, local schools, industry and agencies.<br><br>Be the go-to source for data/information, education and resources.<br><br>A vibrant community hub.<br><br>Keep the gates open! | <ul style="list-style-type: none"> <li>● Get everyone onboard with the vision, goals, plans and activities of the programme.</li> <li>● Identify opportunities to share and implement mātauranga Māori (Māori knowledge) and to understand hapū/iwi structures, protocols and decision making processes.</li> <li>● Initiate the leadership team and secure funding to implement community projects, support on-farm improvements and engage students.</li> <li>● Setup effective participation, data collection, information sharing, collaboration and communications systems.</li> </ul> |

|   |   |   |
|---|---|---|
|   |   | <ul style="list-style-type: none"> <li>• Share successes.</li> <li>• Support in principle the establishment of the Whanganui Region Catchment Community and explore opportunities for collaboration.</li> </ul>   |
| <p><b>Achieve annual improvements to land and fresh-water eco-systems and water quality.</b></p>          | <p>All catchment waterways are in the green zone and swimmable by 2050.</p> <p>Improved stream habitats to support fresh water fish and invertebrates.</p> <p>Strong beneficial insect populations on farms. Healthier soils, effective pest and weed management programmes and stronger, more resilient eco-systems.</p> | <ul style="list-style-type: none"> <li>• Obtain water quality sampling data and maps for the catchment and set water quality benchmarks. Undertake source tracking of contaminants where gaps are seen in the data.</li> <li>• Identify sites on tributaries for fencing, riparian planting, wetland creation, weirs, silt traps, erosion control and enhancement of fresh water fish habitats.</li> <li>• Apply for funding to support restoration of key sites identified.</li> <li>• Conduct research, test and pilot new technologies, innovations and systems to achieve water quality, soil, weed and pest management improvements faster.</li> </ul> |
| <p><b>Be at the leading edge of farm best practice, innovation &amp; sustainable business models.</b></p> | <p>Encourage upskilling and uptake of sustainable and innovative land use initiatives and practices.</p> <p>Have sustainable businesses: know our customers, understand what they want and value, how they behave and what trends are emerging.</p>   | <ul style="list-style-type: none"> <li>• Organise and support farmer experience and information sharing, education and upskilling programmes and field days.</li> <li>• Facilitate dialogue between council and farmers.</li> <li>• Support farmers/producers to be consumer focused, deliver value and to operate efficiently in the digital world.</li> </ul>   |

## 1 YEAR WORK PLAN

| Actions  | Resources/Costs  | People Responsible  |
|--|--|---|
| Finalise strategic plan, annual work plan and budget, meeting calendar and job description for Catchment Co-ordinator by 28 February.  | Tania – NZ Landcare Trust and committee<br>Cost – Nil  | Committee by resolution   |
| Apply for funding for a Co-ordinator.  | Tania – NZ Landcare Trust and committee<br>Cost – Nil  | Treasurer – Mike Russell & Executive  |
| Recruit/appoint Catchment Co-ordinator by 30 May.  | 16 hours p/w @ ~\$40 - \$33k plus travel, administration and other employee/contractor expenses. | Committee members   |
| Compile detailed catchment data identifying hot spots and opportunities for development and additional water testing. Implement water testing programme.<br><br>Update and refresh website.  | Horizons data<br>Testing kits and lab testing<br>Website update<br>Photography<br>\$X?           | Committee & Catchment Co-ordinator<br>Ototoka: Mike Russell & Fraser Middleton<br>Kai Iwi/Mowhanau<br>TBA |
| Organise workshops in-conjunction with committee members<br>1. Farm Environment Plans (Chris Blair)<br>2. Planting Restoration (George Mathews)<br>3. Carbon Credits (Don Richards)<br><br>Design and implement other events as discussed/agreed with the Committee.                                     | NZ Landcare Trust, Beef + Lamb and other industry partners                                       | Committee & Catchment Co-ordinator  |
| Prepare snapshots and insights to highlight good farming practices, environmental projects, innovation, food and fibre trends, opportunities and learnings within our catchment. Create materials for distribution to raise the profile of WWCG via website, news media, social media, stakeholders etc. | Camera, video, graphics, printing etc.   | Catchment Co-ordinator.<br>Note: A contractor could be engaged until Co-ordinator is employed.            |

|  |  |                                       |
|--|--|---------------------------------------|
| Identify opportunities for collaboration with ngā marae/Te Kaahui o Rauru.   | Resource requirements to be determined and accessed. | Catchment Co-ordinator, and committee |
| Identify opportunities for the development of a relationship/education programme with Kai Iwi school and a Whanganui secondary school.   | Resource requirements to be determined and accessed. | Catchment Co-ordinator                |
| Organise public meeting by 30 June 2022 and run at least one community environment activity by 31 December.<br><br>Engage with farmers and community to design a programme of events, activities and information/education workshops for 2023. | Venue hire<br>Catering<br>Speakers and resources     | Catchment Co-ordinator & committee    |
| Review and assess the list of projects identified by the committee, prioritise, plan, secure resources and implement at least one project by 31 December.  | Resource requirements to be determined and accessed. | Catchment Co-ordinator                |



---

## **MEASURING OUR PROGRESS**

### **Key Indicators and Monitoring**

| <b>Goal</b>   | <b>Key Performance Indicators</b>                              |
|---|--|
| <b>Be a tightly knit community, sharing experiences, wisdom, resources and foresight to produce the best food and fibre products from our region.</b> | Number of landowners engaged                                   |
|   | Number of on farm workshops/field days held                    |
|   | Project coordinator funding amount per year                    |
|   | Education coordinator funding amount per year                  |
|   | Number of school events  |
|   | Number of community planting days or events                    |
|   | Identify opportunities to share and implement mātauranga Māori |
|   | Number of innovative farm management practices trialled        |
| <b>Achieve annual improvements to land and fresh-water eco-systems and water quality.</b>   | Number of water samples taken                                  |
|   | Number of projects identified                                  |
|   | Amount of project funding per year                             |
|   | Area of wetlands protected/enhanced                            |
|   | Area of whitebait spawning habitat protected/enhanced          |
|   | Km of riparian fenced  |
|   | Km of riparian planted   |
|   | Number of pest animals caught                                  |

#### **Contact Details:**

|                      |                             |   |
|----------------------|-----------------------------|---|
| <b>Chair</b>         | <b>George Matthews</b>      | <b><a href="mailto:g.matthews@xtra.co.nz">g.matthews@xtra.co.nz</a></b>           |
| <b>Co-Chair</b>      | <b>Anne-Marie Broughton</b> | <b><a href="mailto:am.broughton@xtra.co.nz">am.broughton@xtra.co.nz</a></b>       |
| <b>Treasurer</b>     | <b>Mike Russell</b>         | <b><a href="mailto:mikerussell163@gmail.com">mikerussell163@gmail.com</a></b>     |
| <b>Administrator</b> | <b>Harriet Horrocks</b>     | <b><a href="mailto:africafarmingltd@gmail.com">africafarmingltd@gmail.com</a></b> |

**Date of plan adoption – 18 March 2022.**